

GP2060

## Fuzzy Robots (Pk/12)

### MORE IDEAS...



Create a display or diorama that features your robot.



Color your robot with glow-in-the-dark paints.



Color your robot in your school colors.

**MAKING IT EASY** to SAVE MORE on your next order!

**15% OFF**  
No \$ Minimum

Please mention Offer Code: **M2467**

Limit one per order.

May not be combined with other offers  
or bid or contract pricing.

See [ssww.com](http://ssww.com) for Offer Terms and Conditions.

We reserve the right to terminate this  
offer at any time without notice.

Call Toll-Free  
**1-800-243-9232**

Online:  
**SSWW.COM**

Email:  
**cservice@ssww.com**

FAX:  
**1-800-566-6678**

**S&S** Worldwide

© Copyright 2018 S&S® Worldwide Inc. All rights reserved.  
No part of this project may be copied or duplicated without the express written permission of S&S Worldwide.

Kit may contain silicone gel packets, which should be removed before use.

Reorder Number

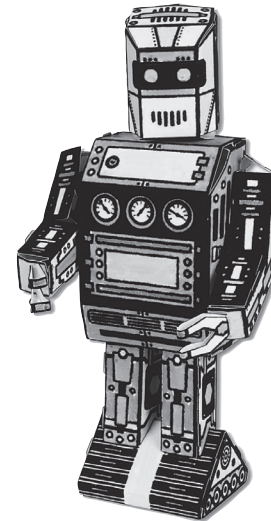
GP2060

1.4

**S&S**® Worldwide  
**MAKING IT EASY**  
to Help People Play and Learn Since 1906

## Fuzzy Robots (Pk/12)

PLEASE READ ALL INSTRUCTIONS BEFORE STARTING



### YOUR KIT CONTAINS:

- Fuzzy Robot Parts Sheet
- Markers
- Brass Fasteners

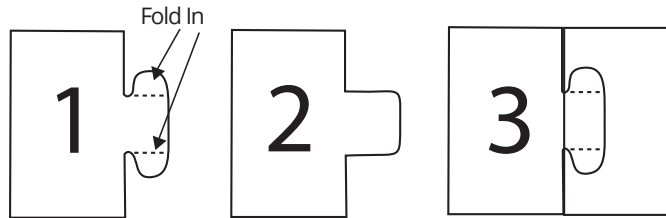
**AGE GROUP: 7 and up**  
**PROJECT TIME: 45 minutes**

### YOU WILL NEED:

- Clean Work Surface
- Tape (optional)

**PROJECT INSTRUCTIONS:**

1. Color in your robot with the markers provided.
2. Pop out the feet and pre-fold along the dotted lines. Fold the unit into a triangle and insert the two tabs into the slots (see Figure 1). Now fold up both sides and insert the tabs into their slots to complete (see Figure 2.)



3. Pop both legs out and fold each into a rectangle and insert the tabs into their slots (see Figure 3).
4. Pop the head out and insert a brass fastener into the rectangular slot on the unprinted side of the sheet (see Figure 4). Fold up the head and insert the tabs into their slots to complete (see Figure 5).
5. Pop both arms out and insert a brass fastener into the rectangular slots on the unprinted side of the sheet (see Figure 6). Fold up each arm and insert the tabs into their slots (see Figure 7).
6. Pop out each hand and fold them over and insert the tabs into the slots on the arms (see Figure 8).
7. Pop out the chest and insert the brass fastener sticking out of the bottom of the head into the circular hole (see Figure 9) and spread the two brass wings to secure.
8. Insert the brass fastener on the left arm into the circular holes (see Figure 10) and spread the two brass wings. Now insert the brass fastener on the right arm into the final circular holes and spread the two brass wings.
9. Fold up the chest and insert the tabs into their slots to complete the head, arms and chest assembly (see Figure 11).
10. Finish your robot by inserting the tabs on the top of the legs into the slots on the bottom of the chest (see Figure 12). Lastly insert the tabs on the bottom of the legs into the slots on the top of the feet (see Figure 13).

