

Reorder Number

GP3001

1.1



Treasure Chest Kit (Pk/48)

PLEASE READ ALL INSTRUCTIONS BEFORE STARTING



YOUR KIT CONTAINS:

- Treasure Chests
- Markers
- Glitter Glue

AGE GROUP: 5 and up
PROJECT TIME: 30 minutes

YOU WILL NEED:
• Ribbon, Trims (optional)

Call Toll-Free **1-800-243-9232**
Email: cservice@ssww.com FAX: 1-800-566-6678



© Copyright 2018 S&S® Worldwide Inc. All rights reserved. No part of this project may be copied or duplicated without the express written permission of S&S Worldwide.

Kit may contain silicone gel packets, which should be removed before use.

Reorder Number

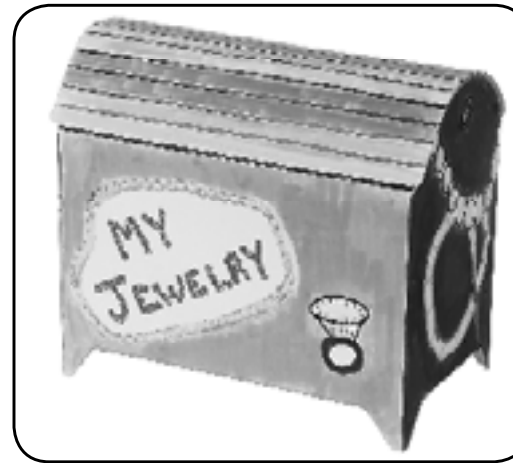
GP3001

1.1



Treasure Chest Kit (Pk/48)

PLEASE READ ALL INSTRUCTIONS BEFORE STARTING



YOUR KIT CONTAINS:

- Treasure Chests
- Markers
- Glitter Glue

AGE GROUP: 5 and up
PROJECT TIME: 30 minutes

YOU WILL NEED:
• Ribbon, Trims (optional)

Call Toll-Free **1-800-243-9232**
Email: cservice@ssww.com FAX: 1-800-566-6678



© Copyright 2018 S&S® Worldwide Inc. All rights reserved. No part of this project may be copied or duplicated without the express written permission of S&S Worldwide.

Kit may contain silicone gel packets, which should be removed before use.

GP3001

INSTRUCTIONS:

1. Decide what style your chest will be.
2. Color the chest while the pieces are still flat.
3. Fold the box. When folding the bottom of the box, see the numbers for which pieces to fold first, second and third (1-2-3).
4. The score lines in the lid of the box are so that it will curve when closed. Insert the top flap into the top of the box and the lid will curve automatically for you.
5. Glue on any trims as desired. Add a few glitter glue accents to add sparkle to your design. (optional)
6. Allow time to dry.

MORE IDEAS:

1. This chest may become a jewelry chest, a keepsake chest, or a gift box for small items.
2. Add some glue and colored sand to the outside to create an ocean theme.
3. Try using paint on your treasure chest.

Find ideas at [SSWW.com/blog](https://www.ssw.com/blog):



@SSWorldwidecatalog



@ssworldwide



@ssworldwide



@SSWorldwide

GP3001

INSTRUCTIONS:

1. Decide what style your chest will be.
2. Color the chest while the pieces are still flat.
3. Fold the box. When folding the bottom of the box, see the numbers for which pieces to fold first, second and third (1-2-3).
4. The score lines in the lid of the box are so that it will curve when closed. Insert the top flap into the top of the box and the lid will curve automatically for you.
5. Glue on any trims as desired. Add a few glitter glue accents to add sparkle to your design. (optional)
6. Allow time to dry.

MORE IDEAS:

1. This chest may become a jewelry chest, a keepsake chest, or a gift box for small items.
2. Add some glue and colored sand to the outside to create an ocean theme.
3. Try using paint on your treasure chest.

Find ideas at [SSWW.com/blog](https://www.ssw.com/blog):



@SSWorldwidecatalog



@ssworldwide



@ssworldwide



@SSWorldwide