

RE279

## Shell Cross Boxes (Pk/24)

### MORE IDEAS...



Design a pattern on the side of your box and paint with different colors. Decorate your shell cross box with other materials such as sand, colored rice, markers, pasta and more.

**MAKING IT EASY** to **SAVE MORE** on your next order!

**\$10 OFF**

Your Next Order of  
only \$39.00 or more.

Please mention Offer Code: **M2467**  
Minimum order \$39 excludes shipping and taxes.

Limit one per order.

May not be combined with other offers  
or bid or contract pricing.

See current S&S® catalog or Help at  
ssww.com for Offer Terms and Conditions.

We reserve the right to terminate this  
offer at any time without notice.

Call Toll-Free  
**1-800-243-9232**

Online:  
**SSWW.COM**

Customer Service:  
**1-800-937-3482**

Email:  
**cservice@ssww.com**

FAX:  
**1-800-566-6678**

Reorder Number

RE279

1.0

**S&S** Worldwide  
**MAKING IT EASY**  
to Help People Play and Learn



## Shell Cross Boxes (Pk/24)

PLEASE READ ALL INSTRUCTIONS BEFORE STARTING



### YOUR KIT CONTAINS:

- Cross Boxes and Lids
- Acrylic Paint
- Paint Brushes
- Shells
- Glue
- Tablecloth

**AGE GROUP: 8 and up**  
**PROJECT TIME: 30 minutes**

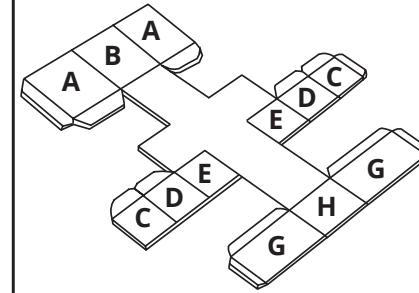
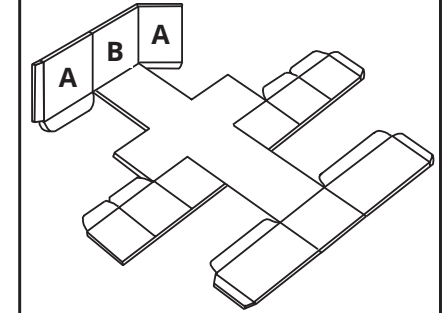
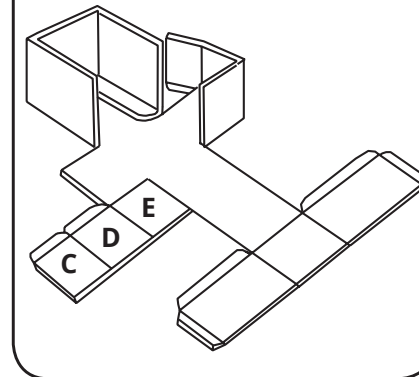
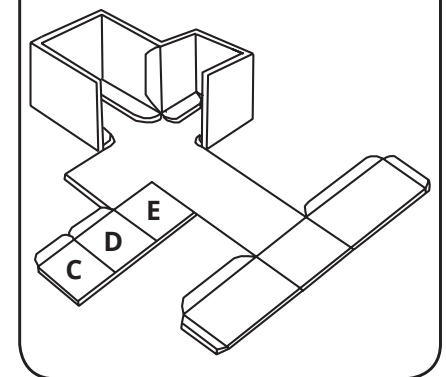
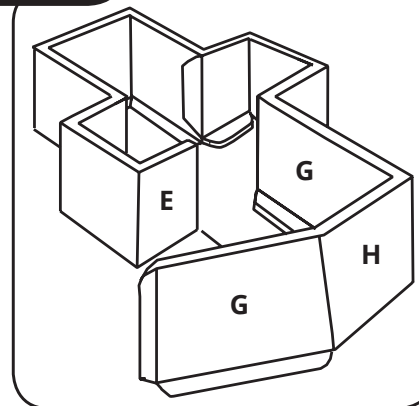
### YOU WILL NEED:

- Water for Brushes
- Paper Towels

**S&S** Worldwide

**INSTRUCTIONS:**

1. Select a box bottom and lid. Follow figure 1 for labeled tabs.
2. Fold tabs A-B-A up. Fold flap A around the top of the cross and glue bottom tabs to the inside base of the box (See figure 2).
3. Fold tabs C-D-E up one side at a time. Fold flaps C and D around the side of cross and glue bottom tabs to inside base of the box (See figure 3).
4. Glue the end tab on flap C to the inside of flap A. Repeat this on the other side (See figure 4).
5. Fold up tabs G-H-G. Wrap flap G around the long part of the cross. Glue bottom tabs to the inside base of the cross. Fold and glue the end tabs of flap G to the inside of flap E (See figure 5).
6. Select the shells you would like on the top of your lid and plan your design. Apply glue to the shells and place them on the lid. Let dry (See figure 6).
7. Select a color for your cross shell box and paint the entire box. You may choose to paint the shells or leave them plain. Let dry.

**FIGURE 1****FIGURE 2****FIGURE 3****FIGURE 4****FIGURE 5****FIGURE 6**